



INTERNATIONAL MIRROR CLASS GUL BRITISH OPEN NATIONAL CHAMPIONSHIPS

Monday 24th – Friday 28th July 2017

Organising Authority: Restronguet Sailing Club,
Falmouth, Cornwall, UK

in conjunction with the
International Mirror Class Association (IMCA) and UK International Mirror
Class Association (UKIMCA)

SAILING INSTRUCTIONS

Abbreviations:

[NP] - A breach of this rule will not be grounds for protest by a boat.

[DP] - Rules for which the penalties are at the discretion of the protest committee.

1. RULES

- 1.1 The regatta will be governed by the rules as defined in *The Racing Rules of Sailing* (RRS).
- 1.2 The RYA prescriptions that are relevant to entries from other national authorities are stated at Addendum A.
- 1.3 RRS Appendix T "Arbitration" applies. The rules of Appendix T are stated at Addendum B. The Post-Race Penalty stated in T1(b) is changed to be 30%, or 50% of the difference between her finishing position and the number of entries, whichever is less.
- 1.4 If there is a conflict between languages, the English text shall take precedence.

2. NOTICES TO COMPETITORS

The race office is located within Restronguet Sailing Club (RSC). Notices to competitors will be posted on the official notice board on the outside wall of the club. Notices may also be posted at <http://www.2017worlds.mirrorsailing.org>.

3. CHANGES TO SAILING INSTRUCTIONS

Any change to the sailing instructions will be posted before 0830 on the day it will take effect, except that any change to the schedule of races will be posted by 2000 on the day before it will take effect. Changes may also be posted at <http://www.2017worlds.mirrorsailing.org>.

4. SIGNALS MADE ASHORE

- 4.1 Signals made ashore will be displayed from the signals mast at RSC.
- 4.2 When flag AP is displayed ashore, "1 minute" is replaced with "not less than 30 minutes" in RRS Race Signals AP. This changes RRS Race Signals AP.
- 4.3 Flag AP over H displayed ashore means "Boats shall not leave the shore. Wait for further instructions". This adds to RRS Race Signal AP over H.

5. SCHEDULE

5.1 Schedule

Date	Race and Official Functions	Time	High Water
Monday 24 th and Tuesday 25 th July	Registration & Equipment Inspection	0900-1700	-
Wednesday 26 th July	Competitor briefing at RSC	0900	0813 5.1m
	Up to four races back-to-back	First warning signal 1055	
Thursday 27 th July	Up to four races back-to-back	First warning signal 1055	0853 5.0m
Friday 28 th July	Up to four races back-to-back	First warning signal 1055	0931 4.8m
	Prize-giving/closing ceremony	After racing	

The warning signal for a succeeding race will be made as soon as practicable. To alert boats that a race or sequence of races will begin soon, the orange starting line flag will be displayed with one sound at least five minutes before a warning signal is displayed.

5.2 On the last scheduled day of racing no warning signal will be made after 1500.

6. CLASS FLAG

The class flag displayed at the warning signal will be IC Numeral 6.

7. RACING AREAS

7.1 Racing will take place in the Fal estuary (see addendum C).

7.2 The day's course area will be displayed on the official notice board not less than 60 minutes before the first scheduled warning signal.

8. THE COURSE

The diagrams in addendum D shows the course, the order in which marks are to be passed, and the side on which each mark is to be left. The course signal will be displayed on a board on the side of the race committee signals vessel.

9. MARKS

9.1 Marks 1, 2, and 3 will be orange pyramid inflatable buoys.

9.2 A new mark as provided in SI 11 will be orange spherical buoy with a painted black band.

9.3 The mark at the starboard end of the start line will be the race committee signals vessel. The mark at the port end will be a race committee vessel or a buoy with an orange flag.

9.4 The finish line marks will be the race committee signals vessel at the starboard end and a buoy with an orange flag at the port end.

10. THE START

10.1 The starting line will be between staffs displaying orange flags on the starting marks.

10.2 A boat starting later than 5 minutes after her starting signal will be scored Did Not Start. This changes RRS A4 & A5.

11. CHANGE TO THE NEXT LEG OF THE COURSE

To change the next leg of the course, the race committee will lay a new mark (or move the finishing line) and remove the original mark as soon as practicable. When in a subsequent change a new mark is replaced, it will be replaced by the original mark.

12. THE FINISH

The finishing line will be between staffs displaying orange flags on the finishing marks.

13. TIME LIMITS AND TARGET TIMES [NP]

13.1 Time limits and target times are as follows:

Target Time	Finish Window	Time Limit	Mark 1 Time Limit
45 mins	15 mins	75 mins	30 mins

- 13.2 Failure to meet the target time will not be grounds for redress. This changes rule 62.1(a).
13.3 If no boat has passed Mark 1 within the Mark 1 time limit the race will be abandoned.
13.4 Boats failing to finish within the stated Finish Window after the first boat sails the course and finishes will be scored Did Not Finish unless awarded a place by a Backsweep (see SI 13.5). This changes RRS 35, A4 and A5.
13.5 Backsweep. During and/or after the Finish Window a Backsweep of any boats that have not finished may be undertaken and appropriate places allocated. This changes RRS 35, A4 and A5. The race officer's decision in the matter shall be final and shall not be grounds for redress. Failing to undertake a Backsweep shall not be grounds for redress. This changes RRS 62.1(a).

14. PROTESTS AND REQUESTS FOR REDRESS

- 14.1 Protest forms are available at the race office. Protests and requests for redress or reopening shall be delivered there within the appropriate time limit.
14.2 The protest time limit is 60 minutes after the last boat has finished the last race of the day.
14.3 Notices will be posted no later than 30 minutes after the protest time limit to inform competitors of hearings in which they are parties or named as witnesses. Hearings will be held in the designated protest room located at the RSC beginning at the time posted.
14.4 Notices of protests by the race committee or protest committee will be posted to inform boats under RRS 61.1(b).
14.5 Breaches of SIs marked [NP] will not be grounds for protest by a boat. This changes RRS 60.1(a).
14.6 Penalties for breaches of SIs marked [DP] or class rules are at the discretion of the protest committee.
14.7 A boat may accept a discretionary penalty for the breaches stated in SI 14.6 before a hearing concerning the same incident by completing a form available from the protest room.
14.8 On the last scheduled day of racing, a request for redress based on a protest committee decision shall be delivered no later than 30 minutes after the decision was posted. This changes RRS 62.2.
14.9 Adding to RRS 66, if race signal "N over A" is displayed ashore on the last scheduled day of racing a request for reopening a hearing shall be delivered not later than 30 minutes after the signal is displayed.

15. SCORING

- 15.1 The championship shall comprise a 10-race series. A minimum of 4 races shall be completed to constitute the championship.
15.2 When fewer than 5 races have been completed, no score shall be excluded.
15.3 When from 5 to 9 races have been completed, a boat's series score will be the total of her race scores excluding her worst excludable score.
15.4 When 10 races have been completed, a boat's series score will be the total of her race scores excluding her 2 worst excludable scores.
15.5 To request correction of an alleged error in posted race or series results, a boat shall complete a scoring enquiry form available at the race office.

16. SAFETY REGULATIONS [DP][NP]

- 16.1 The race committee will protest a boat for a breach of these safety regulations.
16.2 Rule 40 applies at all times while afloat. This changes RRS 40.
16.3 Boats not leaving the shore for a scheduled race shall promptly notify the race office.
16.4 Boats leaving the shore shall check-out from the tally control point located at the side of the club adjacent to the RSC slipway, and check-in when returning ashore.
16.5 On arrival in the racing area, boats shall sail closely to the race committee signals vessel, clearly showing their sail numbers.
16.6 A boat that retires from racing shall notify the race committee before leaving the racing area, or if that is not possible, shall notify the race office as soon as possible after returning ashore.
16.7 When the race committee signals vessel displays flag V with repetitive sounds, all official and support boats shall monitor marine VHF Channel M2 (Icom P4) for search, rescue and other instructions.

17. REPLACEMENT OF CREW OR EQUIPMENT [DP]

- 17.1 Substitution of competitors will not be allowed without the prior written approval of the race committee. Requests shall be made on a form available at the race office.
- 17.2 Substitution of equipment identified during pre-event inspection will not be allowed unless damaged or lost and authorised by the race committee. Requests shall be made to the committee at the first reasonable opportunity.

18. EQUIPMENT AND MEASUREMENT CHECKS [DP]

Boats and equipment may be inspected at any time during the regatta for compliance with the class rules and sailing instructions. On the water, a boat can be instructed by a race committee equipment inspector or measurer to proceed immediately to a designated area for inspection.

19. IDENTIFICATION AND EVENT ADVERTISING [DP]

- 19.1 When provided by the organising authority, boats or crew shall carry, display or wear the following as instructed:
- (a) Jib numbers;
 - (b) Yellow, blue or red bibs;
 - (c) Event sponsor advertising.

20. OFFICIAL BOATS

Official boats will be marked as follows:

Race committee signals vessel	Letters "RSC Race Control"
Start pin vessel	Letters "RSC Safety"
Patrol	Yellow flag with black numbers
Jury/judges	White flag with black "Jury"
Media	Black flag with white "Press"

21. SUPPORT BOATS [DP]

- 21.1 For the purposes of these sailing instructions a support boat includes any boat that is under the control or direction of a *support person*.
- 21.2 Support boats shall display identification provided by the organising authority.
- 21.3 Support boats shall not interfere with boats racing or official boats, or create a wake that affects boats racing.
- 21.4 Support boats shall not be positioned:
- (a) closer than 50 metres of any boat racing;
 - (b) within 50 metres of the starting line and marks from the time of the preparatory signal until all boats have left the starting area, or the race committee signals a postponement, general recall or abandonment;
 - (c) between any boat racing and the next mark of the course;
 - (d) within 50 metres of any mark of the course while boats are in the vicinity of that mark;
 - (e) within 50 metres of the finishing line and marks while boats are finishing.
- 21.5 In addition, support boats that are motoring above 5 knots shall remain at least 150 metres from any boat racing.
- 21.6 Support boats shall comply with any reasonable request from a regatta official.

22. BERTHING AND BOAT PARK [DP]

When ashore boats shall be kept in their assigned places in the boat park.

23. RADIO COMMUNICATION [DP]

Except in an emergency, a boat shall neither make nor receive radio transmissions while racing. This restriction also applies to mobile telephones.

24. PRIZES

Prizes will be awarded as listed in the notice of race.

25. RISK STATEMENT

- 25.1** Rule 4 of the Racing Rules of Sailing states: “The responsibility for a boat’s decision to participate in a race or to continue racing is hers alone”.
- 25.2** Sailing is by its nature an unpredictable sport and therefore inherently involves an element of risk. By taking part in the event, each competitor agrees and acknowledges that:
- (a) They are aware of the inherent element of risk involved in the sport and accept responsibility for the exposure of themselves, their crew and their boat to such inherent risk whilst taking part in the event;
 - (b) They are responsible for the safety of themselves, their crew, their boat and their other property whether afloat or ashore;
 - (c) They accept responsibility for any injury, damage or loss to the extent caused by their own actions and omissions;
 - (d) Their boat is in good order, equipped to sail in the event and they are fit to participate;
 - (e) provision of a race management team, patrol boats and other officials and volunteers by the event organiser does not relieve them of their own responsibilities;
 - (f) Provision of patrol boat cover is limited to such assistance, particularly in extreme weather conditions, as can be practically provided in the circumstances;
 - (g) It is their responsibility to familiarise themselves with any risks specific to this venue or this event drawn to their attention in any rules and information produced for the venue or event and to attend any safety briefing held for the event.
- 25.3** The fact that the race committee conducts inspections of a boat does not reduce the responsibilities of each competitor set out in these sailing instructions.

26. INSURANCE

Each participating boat shall be insured with valid third-party liability insurance with a minimum cover of UK£3,000,000 per incident or the equivalent. Competitors will be required to sign a declaration to this effect at registration.

Addendum A

RYA National Prescriptions relevant to entries from other national authorities

Rule

3 Acceptance of the Rules

Add new rule 3.6: 'Each competitor and boat owner shall ensure that their *support persons* comply with the *rules*'.

5 Anti-Doping

The national authority procedural rules required by World Sailing regulation 21.16 to implement the World Anti-Doping Code through World Sailing Regulation 21 are the RYA Anti-Doping Rules, as published on the RYA website.

40 Personal Flotation Devices

When a *rule* requires a personal flotation device to be worn, the device shall comply with the specifications for the personal flotation devices that the boat is required to carry. If more than one specification applies, the personal flotation device worn shall comply with the highest of them.

67 Damages

1. Any claim for damages arising from an incident while a boat is bound by *The Racing Rules of Sailing* shall be the subject to the jurisdiction of the courts and not considered by a protest committee.
2. A boat that takes a penalty or retires does not thereby admit liability for damages or that she has broken a rule.

78 Compliance with Class Rules; Certificates

A race committee or technical committee may inspect or measure any **boat** or **personal equipment** at any time.

Terms in **bold** are as defined in the Equipment Rules of Sailing.

APPENDIX R PROCEDURES FOR APPEALS AND REQUESTS

R2.1 Submission of Appeal

Rule R2.1 shall apply except as changed by the following:

1. The appellant shall notify RYA Racing stating an intention to appeal within the relevant time limit in Rule R2.1. No details are needed at this stage.
2. Within 15 days thereafter, the appellant shall send to the RYA a completed appeal form with a copy of the protest committee's decision and other documents listed in rule R2.2, or as far as reasonably possible.
3. Unless the appellant is a personal member of the RYA, an appeal fee, stated on the appeal form, is payable to the RYA and shall be sent with the appeal form.

The appeal form is available from www.rya.org.uk/racing rules or by request to RYA Racing.

R2.4 Failure to Comply with Procedures for Appeal or Request

Add new rules R2.4:

If the appellant does not comply with rule R2.1 as prescribed or the protest committee does not comply with rule R2.3, the RYA will refuse to hear an appeal unless there are exceptional circumstances. If other parties to the protest or the protest committee do not meet the requirements of the procedure, the RYA may decide the appeal as it thinks fit.

APPENDIX T

ARBITRATION

T1 POST-RACE PENALTIES

- (a) Provided that rule 44.1(b) does not apply, a boat that may have broken one or more rules of Part 2 or rule 31 in an incident may take a Post-Race Penalty at any time after the race until the beginning of a protest hearing involving the incident.
- (b) A Post-Race Penalty is a 30% Scoring Penalty calculated as stated in rule 44.3(c). However, rule 44.1(a) applies.
- (c) A boat takes a Post-Race Penalty by delivering to the arbitrator or a member of the protest committee a written statement that she accepts the penalty and that identifies the race number and where and when the incident occurred.

T2 ARBITRATION MEETING

An arbitration meeting will be held prior to a protest hearing for each incident resulting in a *protest* by a boat involving one or more rules of Part 2 or rule 31, but only if each *party* is represented by a person who was on board at the time of the incident. No witnesses will be permitted. However, if the arbitrator decides that rule 44.1(b) may apply or that arbitration is not appropriate, the meeting will not be held, and if a meeting is in progress, it will be closed.

T3 ARBITRATOR'S OPINION

Based on the evidence given by the representatives, the arbitrator will offer an opinion as to what the protest committee is likely to decide:

- (a) the *protest* is invalid,
- (b) no boat will be penalized for breaking a rule, or
- (c) one or more boats will be penalized for breaking a rule, identifying the boats and the penalties.

T4 ARBITRATION MEETING OUTCOMES

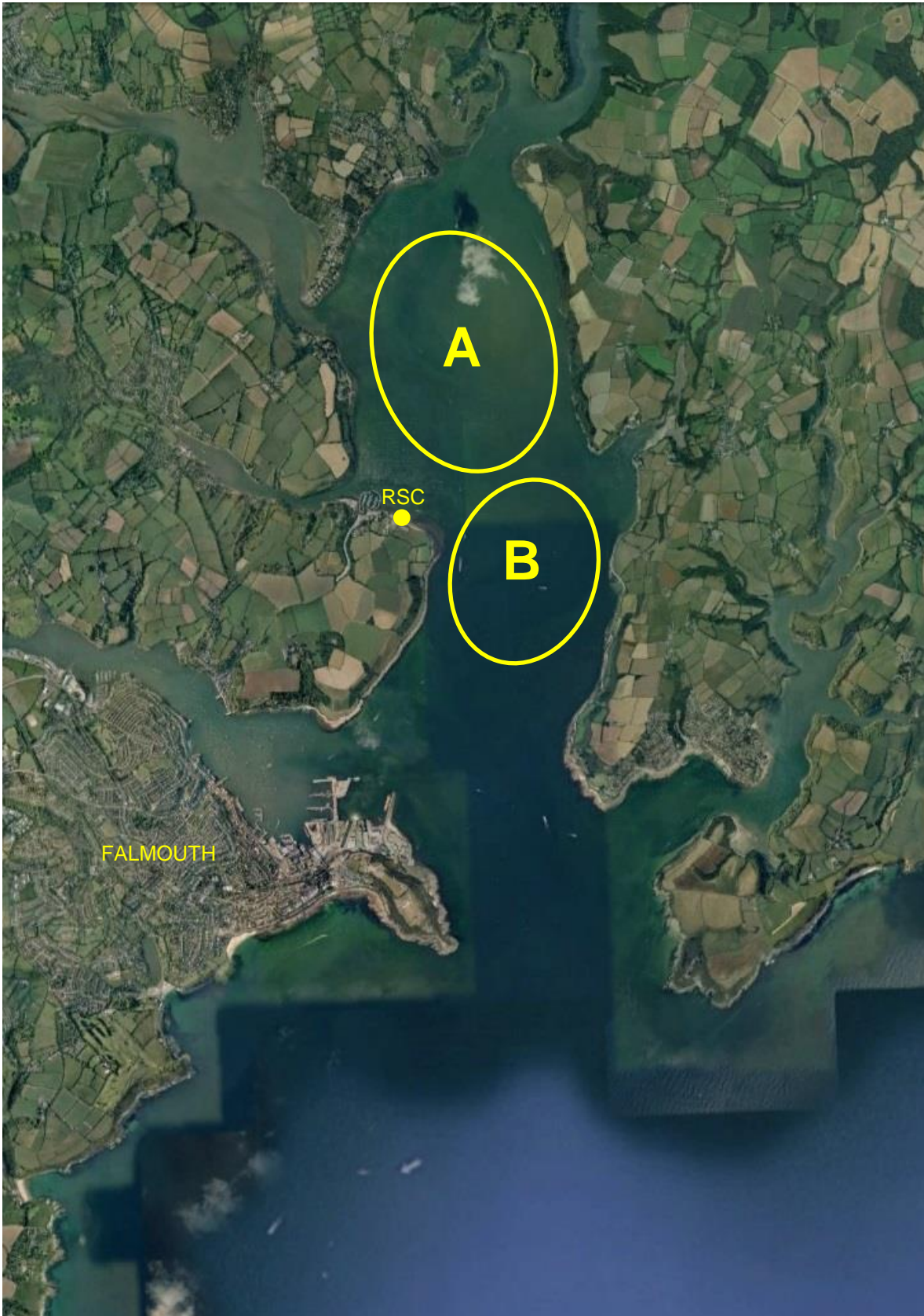
After the arbitrator offers an opinion,

- (a) a boat may take a Post-Race Penalty, and
- (b) a boat may ask to withdraw her *protest*. The arbitrator may then act on behalf of the protest committee in accordance with rule 63.1 to allow the withdrawal.

Unless all *protests* involving the incident are withdrawn, a protest hearing will be held.

Addendum C

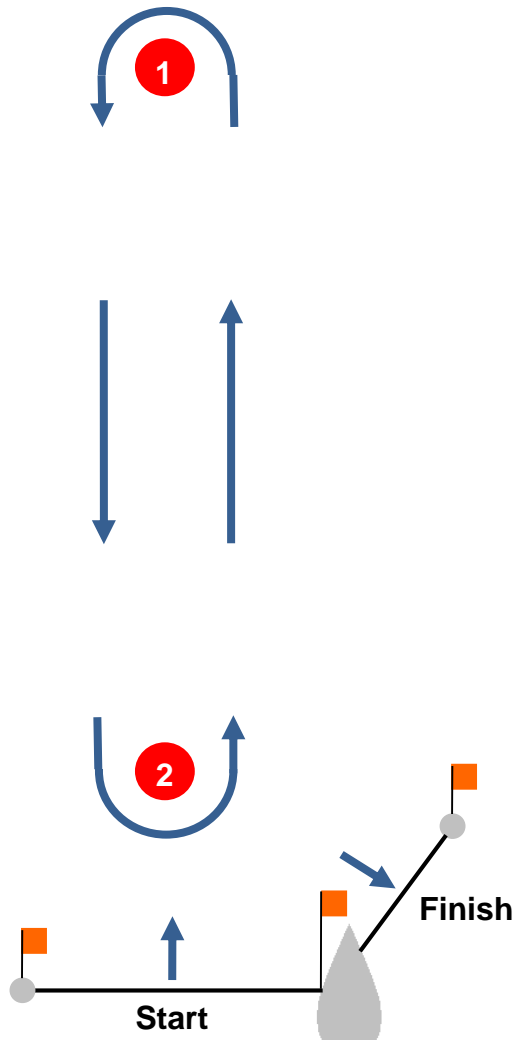
Indicative course areas



Addendum D

Course illustration and mark roundings

Course W: Windward-Leeward



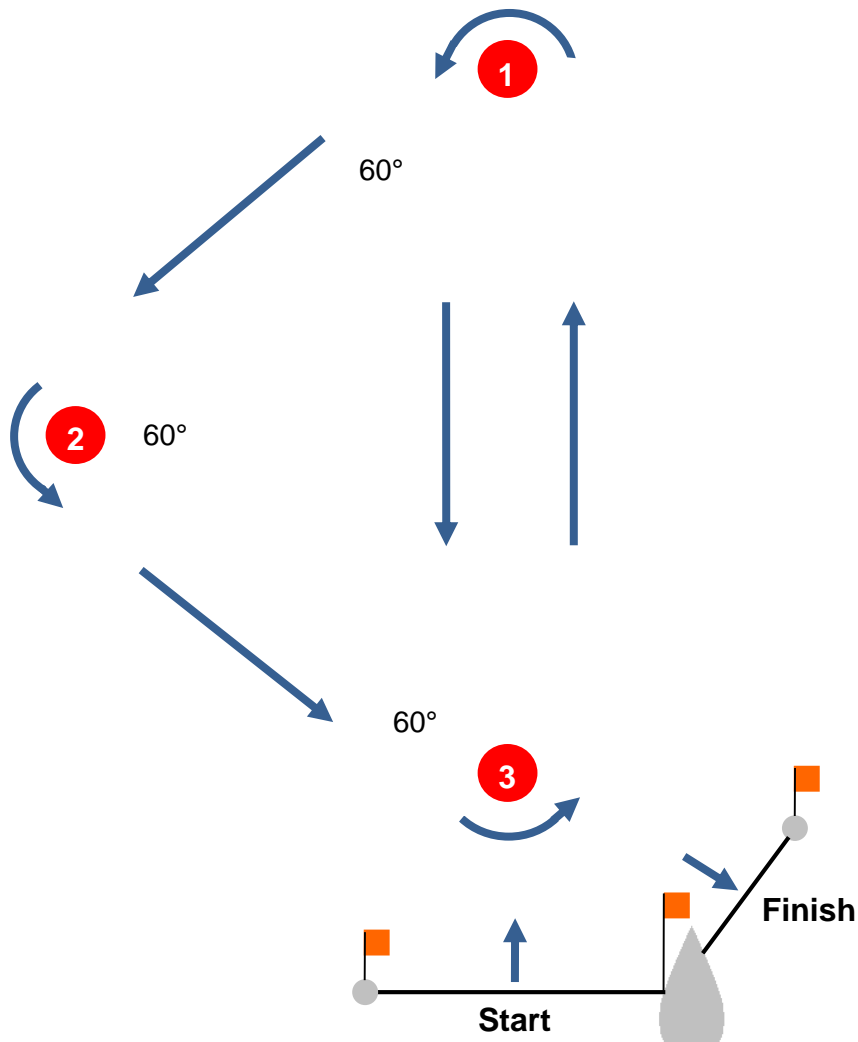
Signal	Mark Rounding Order
W2	Start - 1 - 2 - 1 - 2 - Finish
W3	Start - 1 - 2 - 1 - 2 - 1 - 2 - Finish

If the shortened course signal is displayed by the race committee signals vessel, or by an official boat stationed at Mark 2, then boats shall round Mark 2 and proceed to the Finish. This changes RRS 32.2.

Addendum D

Course illustration and mark roundings

Course TW: Triangle-Windward-Leeward



Signal	Mark Rounding Order
TW2	Start - 1 - 2 - 3 - 1 - 3 - Finish
TW3	Start - 1 - 2 - 3 - 1 - 3 - 1 - 2 - 3 - Finish

If the shortened course signal is displayed by the race committee signals vessel, or by an official boat stationed at Mark 3, then boats shall round Mark 3 and proceed to the Finish. This changes RRS 32.2.